

# Distribution of Groundwater Level Monitoring Sites within Transboundary Aquifers (TBA)

## LIMPOPO

Active Sites  
Limpopo Provincial Office

MARCH 2026

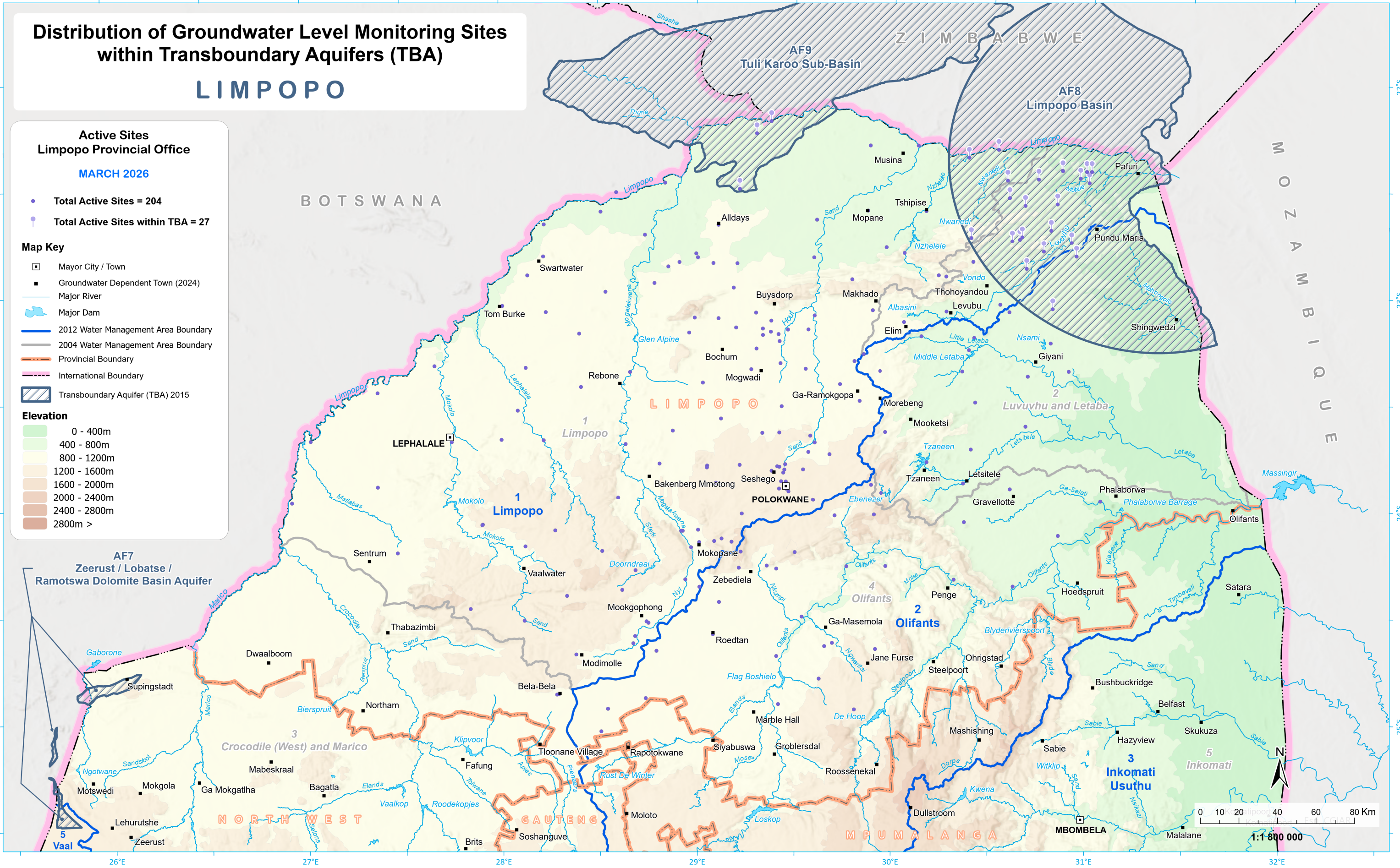
- Total Active Sites = 204
- Total Active Sites within TBA = 27

### Map Key

- Mayor City / Town
- Groundwater Dependent Town (2024)
- Major River
- Major Dam
- 2012 Water Management Area Boundary
- 2004 Water Management Area Boundary
- Provincial Boundary
- International Boundary
- Transboundary Aquifer (TBA) 2015

### Elevation

- 0 - 400m
- 400 - 800m
- 800 - 1200m
- 1200 - 1600m
- 1600 - 2000m
- 2000 - 2400m
- 2400 - 2800m
- 2800m >



### Data Sources:

Towns, Elevation and International Boundaries - Department of Agriculture, Land Reform and Rural Development (DALRRD), Chief Directorate: National Geospatial Information (NGI); Groundwater data: Department of Water & Sanitation (DWS), Directorate National Hydrological Services. Hydstra Database. Transboundary Aquifers of the World [map]. Edition 2015. Delft, Netherlands: IGRAC (International Groundwater Resources Assessment Centre), 2015, UNESCO-IHP (UNESCO International Hydrological Programme), 2015.

### Map produced by:

Department of Water & Sanitation: Directorate: Spatial Information (SI);  
Sub-Directorate: Geographic Information and Archiving (GI&A) - Cartographic Services Unit.  
Map Date: Mar 2026 (Task Ref: GM26\_006)



water & sanitation

Department:  
Water and Sanitation  
REPUBLIC OF SOUTH AFRICA

LIMPOPO